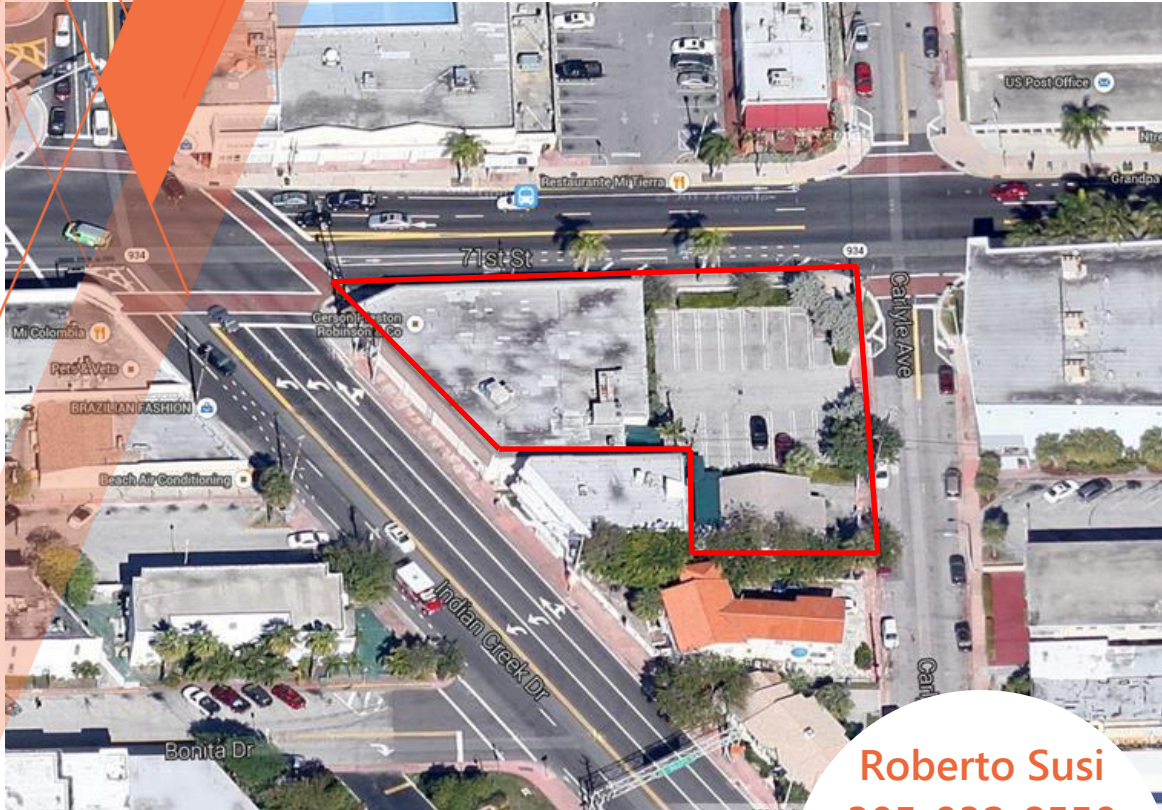


666 71st Street, Miami Beach, FL



Roberto Susi
 305-932-8550
 Roberto@axiom-
 cap.com

New Development! - Up to 9,640 SF Available

- Centrally located in Miami Beach on the strongest corner in North Beach
- New Residential Towers being built on the Beach just minutes away
- Easily accessible from Biscayne Blvd

	<u>3 Miles</u>	<u>5 Mile</u>
<u>Population</u>	64,548	206,500
<u>Average Income</u>	\$75,370	\$65,718
<u>Average Age</u>	47	46

Data obtained from Loopnet

Available Space

- 1,200 - 9,640 SF
- Urban Retail
- Ground Lease Opportunity
- 2nd Floor Space

